

**ALUMNO:** \_\_\_\_\_

**1**

Calcula las siguientes sumas de fracciones.

$$\frac{1}{5} + \frac{4}{3} + \frac{1}{2} =$$

$$\frac{2}{3} + \frac{1}{9} + \frac{3}{5} =$$

$$\frac{4}{7} + \frac{2}{4} + \frac{1}{8} =$$

**1**

Calcula los siguientes productos de fracciones.

$$\frac{2}{3} \times \frac{1}{4} \times \frac{3}{5} =$$

$$\frac{1}{8} \times \frac{2}{3} \times \frac{2}{9} =$$

$$\frac{3}{7} \times \frac{2}{9} \times \frac{1}{8} =$$

$$\frac{4}{7} \times \frac{5}{6} \times \frac{9}{5} =$$

$$\frac{1}{9} \times \frac{3}{11} \times \frac{4}{7} =$$

$$\frac{3}{2} \times \frac{9}{10} \times \frac{4}{6} =$$

**2**

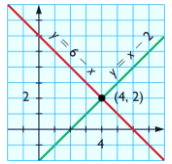
Calcula las siguientes restas de fracciones.

$$\frac{4}{5} - \frac{1}{7} =$$

$$\frac{2}{3} - \frac{4}{7} =$$

$$\frac{3}{10} - \frac{1}{12} =$$

$$\frac{9}{15} - \frac{3}{8} =$$



**2**

Calcula.

$$\frac{1}{2} \text{ de } \frac{10}{3} = \frac{1}{2} \times \frac{10}{3} = \frac{10}{6}$$


---

$$\frac{3}{4} \text{ de } \frac{2}{9} =$$


---

$$\frac{5}{7} \text{ de } \frac{9}{6} =$$

$$\frac{2}{3} \text{ de } 60 = \frac{2}{3} \times \frac{60}{1} = \frac{120}{3} = 40$$


---

$$\frac{3}{5} \text{ de } 90 =$$


---

$$\frac{4}{7} \text{ de } 490 =$$

**1**

Calcula las siguientes divisiones de fracciones.

$$\frac{3}{7} : \frac{2}{8} =$$


---

$$\frac{4}{5} : \frac{3}{7} =$$


---

$$\frac{9}{12} : \frac{7}{5} =$$


---

$$\frac{4}{11} : \frac{3}{16} =$$

$$\frac{7}{9} : \frac{2}{12} =$$

$$\frac{4}{17} : \frac{3}{16} =$$

**2**

Observa el ejemplo resuelto y calcula de este modo los restantes.

$$\frac{4}{5} \text{ de } x = \frac{1}{2} \rightarrow x = \frac{1}{2} : \frac{4}{5} = \frac{1 \times 5}{2 \times 4} = \frac{5}{8} \quad \text{Ejemplo}$$

$$\frac{2}{3} \text{ de } x = \frac{3}{8} \rightarrow x =$$

$$\frac{3}{11} \text{ de } x = \frac{7}{12} \rightarrow x =$$

$$\frac{5}{10} \text{ de } x = 30 \rightarrow x = \frac{30}{1} : \frac{5}{10} =$$

$$\frac{6}{12} \text{ de } x = 48 \rightarrow x =$$